

RICKY ENGINEERING SERVICES

Creativity and Sustainability

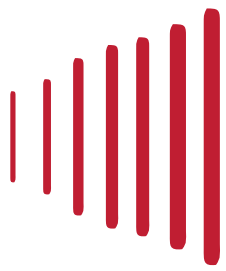


Creativity and Sustainability

RICKY ENGINEERING
SERVICES



COMPANY PROFILE
P.O. Box 800608, Ntinda-Uganda



RICKY
ENGINEERING SERVICES
Creativity and Sustainability

TABLE OF CONTENTS

OVERVIEW

- History*
- Founder’s message*
- Mission, Vision & Core Values*
- Project Management*

SCOPE OF BUSINESS

- Organisation structure*
- Company Objectives*
- Staff Management*
- Work Approach*
- Specific Expertises*
- Environmental, Health & Safety Policy*

PROJECT EXPERIENCE

- Quarry Operations*
- Building Construction*
- Mechanical Department*
- Road constructin*
- Ongoing & Completed projects*



OUR COMMITMENT

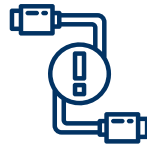


The success of our projects is not only measurable through our clean indicators on safety, quality and delivery timing, but also consists in reaching environmental sustainability and carrying social responsibilities.

Mr. Katungye Derick / Executive Director



100% SAFE HOURS
during execution



0% DEFECTS
at handover



100% ON TIME DELIVERY
following project schedule

HISTORY AND PHILOSOPHY

Ricky Engineering Services Ltd is an indigenous private limited liability company duly incorporated and carrying on business in Uganda, which business includes road construction, general engineering, commercial production and supply of construction materials including hardcore, aggregates, quarry dust, concrete and concrete products, among others.

Since day one Ricky Engineering Services has been a company of simple integrity with straight forward values and an unwavering dedication to see our project commitments through.

Ricky engineering services is envisioned to extend its business to foreign markets and international investors in Uganda and provide optimal design and construction solutions in respect of the following commitments



Our objective is to provide our clients with an 'I am assured' experience when we are chosen to execute their projects. Our emphasis is on clear communication and follow-through procedures to ensure that client's objectives are top priority in the planning and execution of all our processes.

Our project management and execution philosophy is;

- To construct quality, long-lasting and sustaining buildings and roads
- To create and maintain a good working relationship with our clients and provide value for their money
- To ensure consistency of works to enable us attain a good proportion of the market
- Create detailed schedules and resource plans to meet client's project objective,
- Communicate clearly with all project stakeholders,
- Track project progress and fine-tune deviations,
- Supervise closely on quality of work done,
- Complete and commission the project on time

We take pride in our delivery, thus our clients can be assured that only the most experience and qualified people are serving them, all the time.

1 PURPOSE

We exist to improve the concepts of our clients and/or partners by availing them with high levels of professionalism, technology, innovativeness that maximize their opportunities.

2 VISION

Maximum satisfaction and growth .

3 MISSION

To become a leading engineering firm that provides outstanding services in a safe manner

DESIGN AND CONSULTANCY

SUPPLY AND INSTALLATION

MAINTENANCE & WARRANTY

4 CORE VALUES

EXCELLENCE

We strive for the highest standards of quality in design, construction, and project management by engaging in professional development, staying updated on industry

SUSTAINABILITY

We are dedicated to designing and implementing projects in a way that minimizes negative environmental impacts and ensures the longterm viability of the

RESPONSIBILITY

We understand and recognize the impact of projects on environment. We thus manifest in practices such as thorough environmental impact assessments, adherence to safety standards, and a commitment to designing infrastructure that

INTEGRITY

We are committed to maintaining honesty, transparency, and ethical behavior throughout our projects and towards our clients

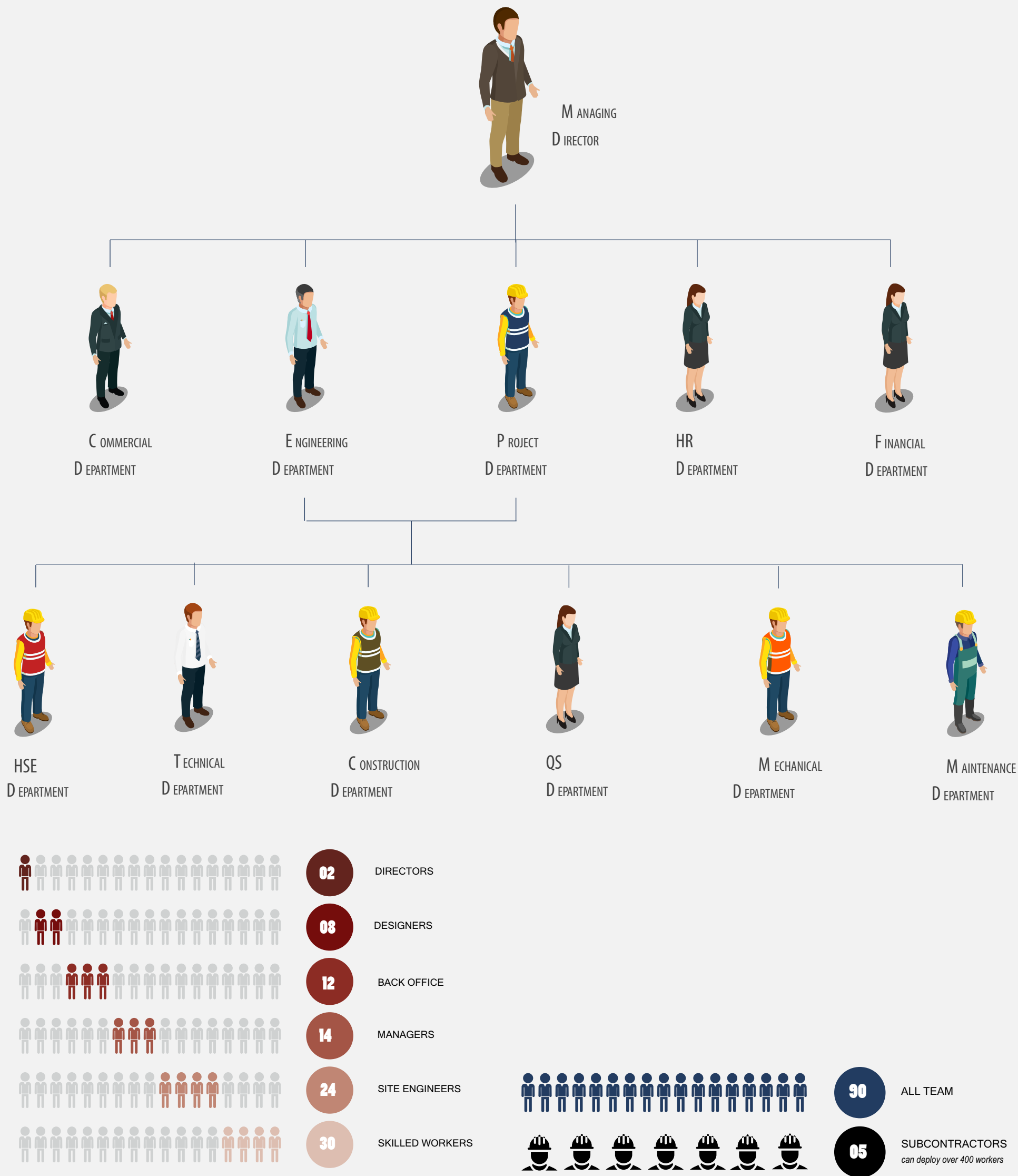
ACCOUNTABILITY

In line with our responsibility, we are accountable for consequences of our design choices, project outcomes and any potential

We handle every aspects of a project from design to construction, maintenance and upgrading

Creativity and Sustainability

OUR ORGANIZATION STRUCTURE



The overall organizational structure focuses on fast implementation, limited bureaucracy, strategic planning and quality works delivery.

Our Staff Management



Ricky Engineering Services Ltd has qualified professionals of diverse disciplines with good understanding of the local conditions in Uganda and in the region. The firm has a team of Project Managers, Project Engineers, Contract Administrators, Office Engineers, Quantity Surveyors, Structural Engineers, Safety Engineers, Design Engineers, Mechanical Engineers, Electrical Engineers, Cost Engineers, Construction Engineers, among others. In addition to its own staff, the company draws on a local network of associated senior professionals within various fields including Civil Engineering, Land Surveying and Valuation, Environmental Planning, Electrical and Mechanical Engineering (Refer to schedule for staff details).

Approach to work



Ricky Engineering Services Ltd follows a consistent methodology designed to suit the needs of our clients along with quality and timely outputs.

The company offers better solutions to the clients by bringing together experiences and expertise from different categories of contractors since construction assignments are diverse in nature. We use cross functional teams in order to capture all available necessary information for better of our clients.

PROFESSIONAL MAINTENANCE SERVICE

With a long-term maintenance contract, we guarantee peace of mind to our clients and partners by keeping your project functional and livable.

Among the defects cover by our maintenance services, the most common and critical ones are



Pressure Loss



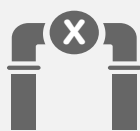
Short Circuit



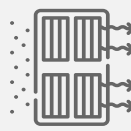
Corrosion



Flow Unbalance



Pipe Obstruction



Dirt in filter



Noise & Vibration



A THOROUGH PREVENTIVE MAINTENANCE ALLOWS TO ANTICIPATE THE RISK OF DISRUPTION THAT COULD AFFECT THE OPERATION AND RESULT IN HIGH REPARATIVE MAINTENANCE COSTS





ENVIRONMENTAL, HEALTH AND SAFETY POLICY

Ricky Engineering Services (RES) is committed to the goal of providing and maintaining a healthy and safe working environment, with a view to continuous improvement. This goal is only achievable by adherence to established objectives striving to exceed all obligations under the occupational health and safety act 2006 and the national environment act cap 153/1989 and other applicable national and international relevant laws, regulations and guidelines, and by fostering an enthusiastic commitment to health, safety and the environment within RES personnel, sub-contractors and visitors. We recognize our moral and legal responsibilities to ensure that our operations do not place either its employees or the wider community at risk of injury or illness.

In Particular

- Management, working in cooperation with the Joint Health and Safety Committee, will strive to take all reasonable steps to reduce workplace hazards to as low as reasonably achievable.
- Supervisors and managers are held accountable for the health and safety of all employees under their supervision. This includes responsibility for applicable training and instruction, appropriate follow up on reported health and safety concerns, and implementation of recommended corrective action. This accountability is integrated into the performance appraisal system.
- Supervisors, workers and visitors are expected to perform their duties and responsibilities in a safe and healthful manner, and are accountable for the Health and Safety of themselves and others.
- RES is committed to providing all necessary training and instruction to ensure that appropriate work practices are followed on the job, and to promote their use off the job.
- If necessary, Ricky Engineering Services will take disciplinary action where individuals fail to work in a healthy and safe manner, or do not comply with applicable legislation or corporate policies and procedures.

Health, safety, the environment and loss control in the workplace are everyone's responsibility. RES expects that everyone will join in our efforts to provide a healthy and safe working environment on a continuous day to day basis. Only through the dedication and efforts of all individuals can RES succeed in providing a healthy safe working environment.



QUARRY OPERATIONS

Ricky engineering services Ltd operates and manages a quarry site comprised in Plot 1&2, Block 371 Kisozi Gomba district. The quarry operations include commercial exploitation of rock, stock pile, establishment of concrete products precast factory, Crusher plant among others.



The quarry site at
Kisozi Gomba District



The crusher
plant.



14-20mm
aggregate size stockpile at the quarry site

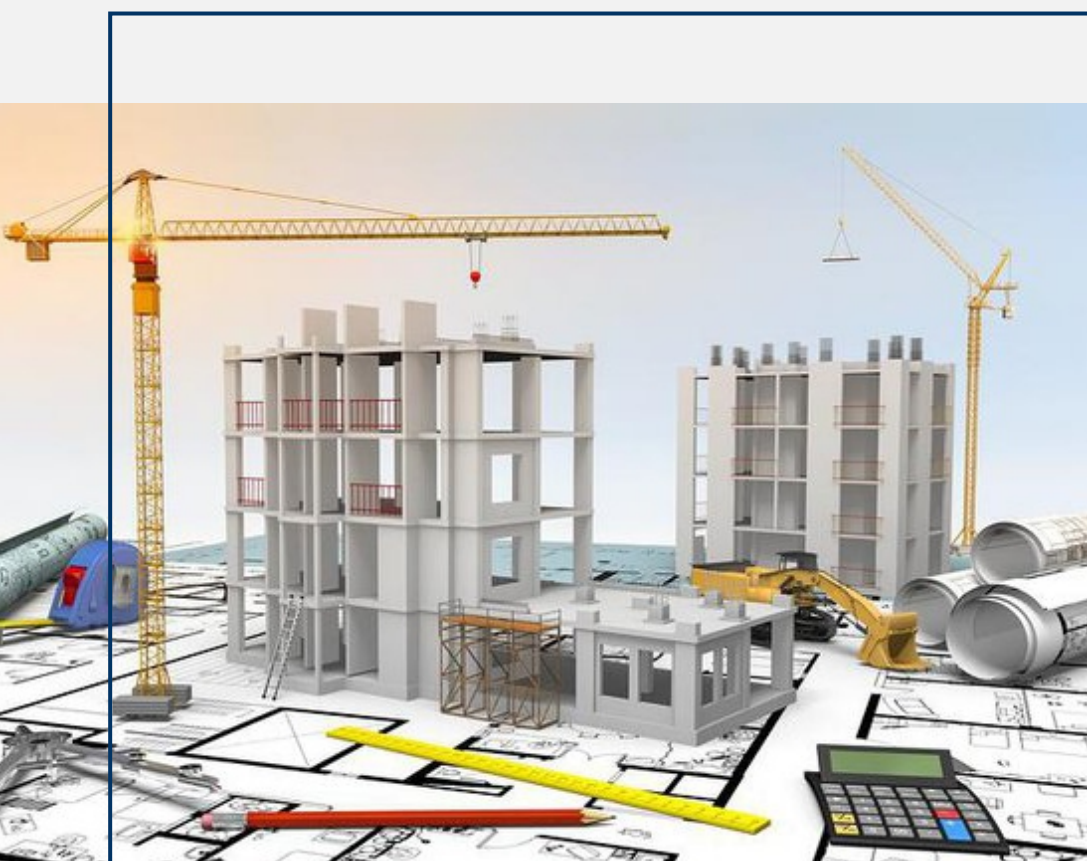


Production of pre cast yard precast pipe culverts at the



BUILDING CONSTRUCTION

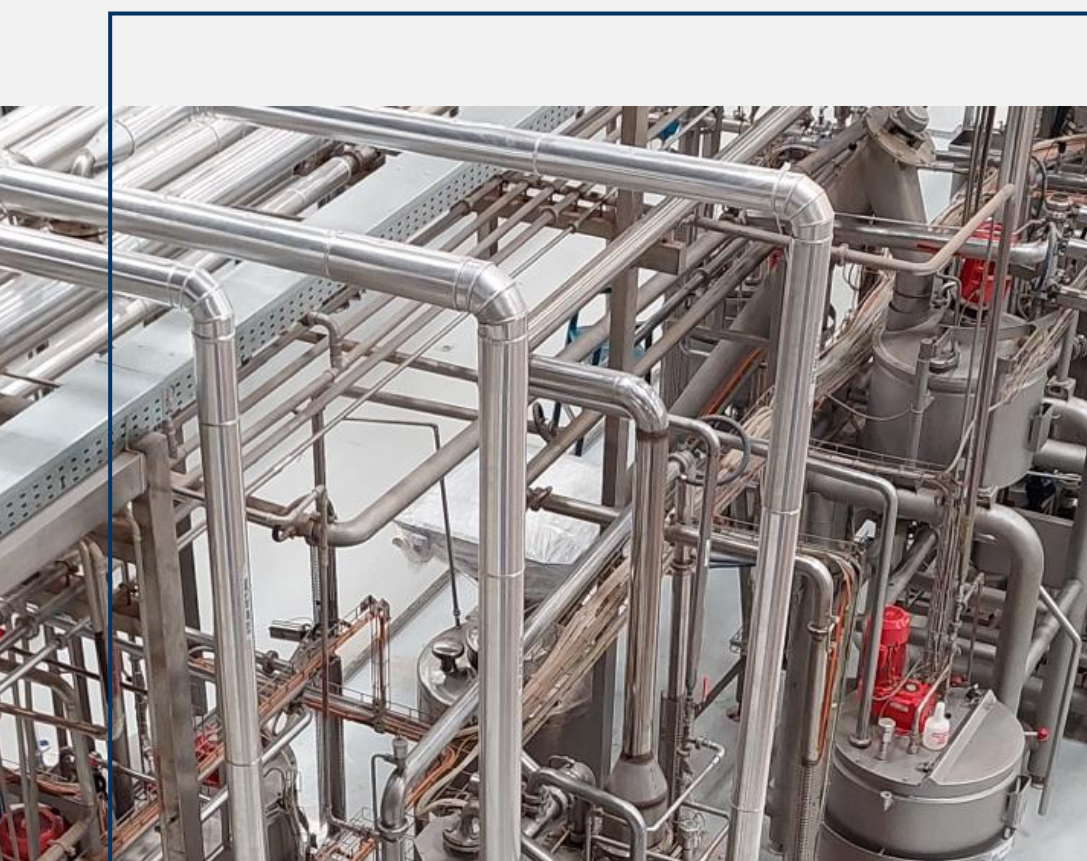
erecting structures, typically residential, commercial, or industrial buildings, from individual elements or components. It involves a combination of design, planning, and execution to create a functional and safe built environment.






MECHANICAL DEPARTMENT

We deal in but not limited to; Industrial installations works, mechanical works, electrical installations, welding and fabrication.



BUSINESS SERVICES

- 
1. Mechanical installations both Industrial and domestic
 2. Electrical installations both industrial and domestic
 3. Automation and programming both industrial and domestic
 4. Calibration on machinery
 5. Machine diagnostics and trouble shooting
 6. Mechanical repairs and maintenance
 7. Equipment overhaul
 8. Welding and fabrication
 9. Machining and fitting i.e. modifications
 10. Spare parts acquisition and supplies
 11. LEAN manufacturing services (production efficiency)
 12. Cost cutting through process improvement
 13. Operations and maintenance training

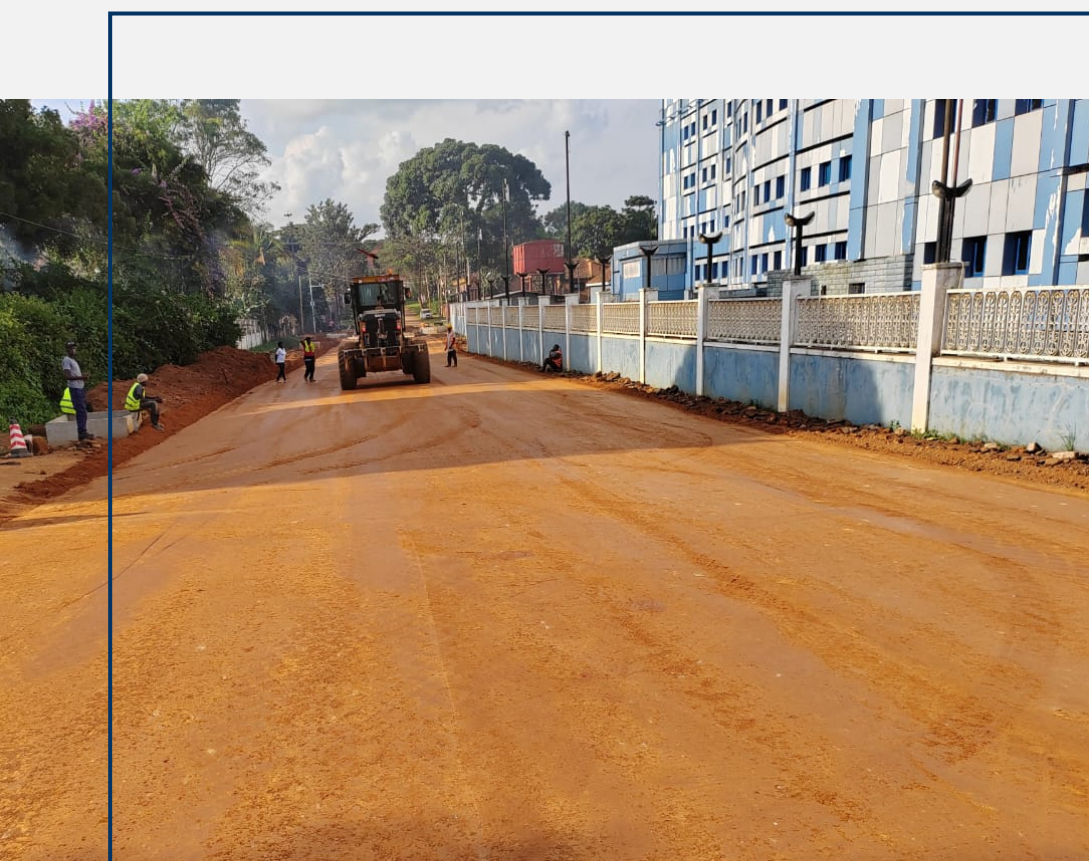
EXPERTISE:

1. Installation of industrial production machinery
2. Deals in repairs of pneumatic systems and hydraulics
3. Performs effective data analysis and tracking machine efficiency
4. Industrial planning and implementing LEAN manufacturing systems
5. Improving overall equipment efficiency
6. Repair and servicing of pumps, motors, valves, etc
7. Prepare machine check lists and documentation
8. Perform machine calibrations and programming
9. Trouble shooting and problem solving
10. Machine servicing and overhauling
11. Machine modifications to improve efficiency



ROAD AND BRIDGE CONSTRUCTION

Ricky Engineering Services Ltd has a vast experience in road construction ranging from earthworks, pavement works, drainage works among others.





Construction of a box culverts along Kanoni- Sembabule-Villa Maria road project (110km)



Construction of Kanoni- Sembabule-Villa Maria Road (Base course)



Installation of guardrails on Kanoni- Sembabule-Villa Maria Road



Ricky Engineering Services has a number of Sino Trucks.



Work Experience

No.	Project	Nature of Contract	Location	Employer/Funder	Major Works Carried out
1	Civil Works for the Upgrading of Kanoni-Sembabule-Villa Maria Road project (110km)	Sub-Contract	Uganda	UNRA (Funded by G.O.U)	Earthworks, Drainage Works, Pavement layers, Pre-cast works, Box Culvert construction, Quarry supplies.
2	Drainage Works on Hill Road (1.450km), Alexander Road (0.407km), Birch Avenue (0.110km) and Baines Terrace (0.393km) in Masaka City	Sub-Contract	Uganda	China Wu Yi (Funded by World Bank)	Drainage works and Earthworks to Formation Level
3	Drainage Works on Elgin Street (0.862km), Nyendo Market Circular Road (0.823km) and Nyendo Market Loop Road (0.310km) in Masaka City	Sub-Contract	Uganda	China Railway No.3 Engineering Group Ltd (Funded by World Bank)	Drainage works and Earthworks to Formation Level
4	Construction Of Road Works For Selected Infrastructure Subprojects In Entebbe Mc Under Cluster 5 - Batch Ii, Lot 2 Including; Serufusa Rd (0.103kms), Khasim Kiwanuka/Babiha Rd (0.784kms), Kitoro Service Lane (0.158kms)	Sub-Contract	Uganda	China Railway No.3 Engineering Group Ltd (Funded by World Bank)	Community Drainage Works in Entebbe
5	Oil Field Civil Works Subcontract (Package II) for Construction and Installation Agreement for Kingfisher Oil Field Production Facilities	Sub Contract	Uganda	Armpass Technical Services Ltd	Construction of GIS Warehouse, Offices, Fire Control Station, Guard House, Substation and Control Room
6	Construction of Community Drains M9.2.1, M9.111, M9 including Box Culverts, Stone pitched drain on Khasim Road, Pedestrian access slabs, Precast Concrete Barrier Kerbs, Edge Kerbs and Pavers in Entebbe Municipal Council	Sub-Contract	Uganda	China Railway No.3 Engineering Group Co. Ltd,	Construction of Community Drains M9.2.1, M9.111, M9 including Box Culverts, Stone pitched drain on Khasim Road, Pedestrian access slabs, Precast Concrete Barrier Kerbs, Edge Kerbs and Pavers



RICKY
ENGINEERING SERVICES
Creativity and Sustainability

Opp. Sals Hotel, Ninda
Plot 3892, Ninda-Nalya Road
P.O. Box 800408 Ninda - Uganda
+256 393 424336/+256 700 591201
rickyengineeringservices@gmail.com



RICKY
ENGINEERING SERVICES
Creativity and Sustainability

Opp. Sals Hotel, Ntinda
Plot 3992, NtindaNalya Road
P.Box 800608 Ntinda - Uganda
+256 393 424336/+256 700 591201
rickyengineeringservices@gmail.com